

STABILIZATION OF PARKING LOT BASE COURSE ON SHORELINE OF SAN FRANCISCO BAY

EMC SQUARED



Application of EMC SQUARED® Stabilizer

With historical soil contamination problems to deal with, a gravel parking lot adjacent to San Francisco Bay that is frequented by windsurfers presented the City of Berkeley's Parks, Recreation & Waterfront Department with a challenge. When it came time to upgrade the parking area from a potholed gravel surface to a paved parking lot with a bathroom facility and artificial turf areas for windsurfers to set up their equipment, the biggest challenge for the Department's design engineers was the limited budget they had available. With plans to place an impervious hot mix asphalt pavement surface course, the City could reduce disposal and construction costs by

using the contaminated soils in place as a stabilized base layer under the pavement. The cost of treating the soils with a conventional cement stabilizer was prohibitive, not withstanding the environmental concerns of treating soils located on the Bay Shoreline with such a highly alkaline chemical. The use of economical and environmentally friendly **EMC SQUARED** liquid stabilizer products solved their problems. Using the in situ soils, the existing gravel materials were incorporated in the upper of two nine-inch (9") stabilized lifts prior to placement of a three-inch (3") asphalt pavement on top of the stabilized layers.



Completed Project

To learn more about the EMC SQUARED System visit www.stabilizationproducts.net
Email: info@stabilizationproducts.net

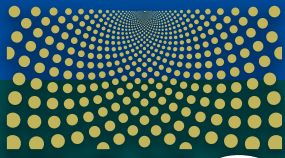


Stabilization Products LLC

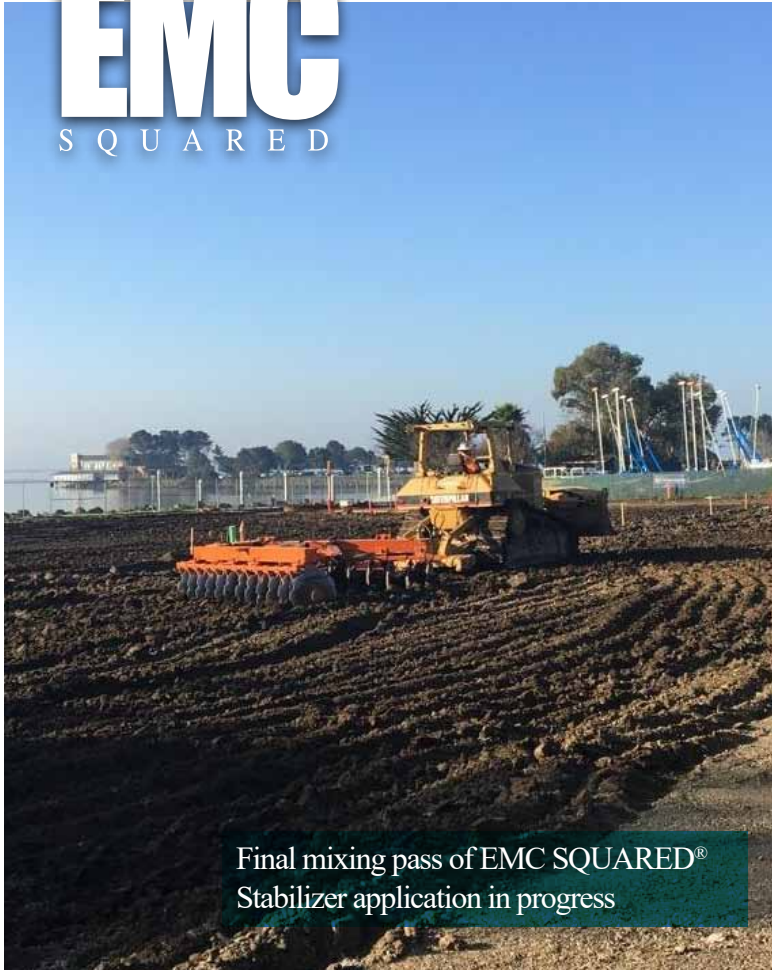
(800) 523-9992 or (209) 383-3296

Canadian Sales: Milieu Road Technologies, Ltd. (780) 875-9159

EMC SQUARED is a registered trademark of Soil Stabilization Products Company
© 2019 Soil Stabilization Products Company - All Rights Reserved



STABILIZATION OF PARKING LOT BASE COURSE ON SHORELINE OF SAN FRANCISCO BAY



Final mixing pass of EMC SQUARED® Stabilizer application in progress

Previously evaluated as safe for use adjacent to sensitive coastal estuaries by a research study funded by the U.S. EPA's National Estuary Program (NEP), and highly effective at stopping the movement of water into treated soils, the **EMC SQUARED** System stabilizer products answered the call for this City of Berkeley project. Public agency engineers, consultants and contractors tasked with designing and building the highway embankments, dikes and levee structures that will be required around San Francisco Bay and throughout the Sacramento Delta to address Sea Level Rise would be well served to inform themselves in regards to how uniquely well suited the **EMC SQUARED** System stabilizer products are for these applications.



Parking lot and windsurfers' preparation area



To learn more about the **EMC SQUARED** System visit www.stabilizationproducts.net
Email: info@stabilizationproducts.net



Stabilization Products LLC

(800) 523-9992 or (209) 383-3296

Canadian Sales: Milieu Road Technologies, Ltd. (780) 875-9159

EMC SQUARED is a registered trademark of Soil Stabilization Products Company
© 2019 Soil Stabilization Products Company - All Rights Reserved